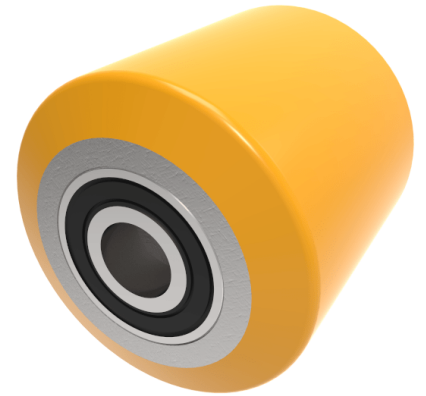


Polyurethane Cast Iron 82mm Ball Bearing Wheel 850kg Load

Product code: BZH8290WPTBJM25

82mm brown polyurethane tyred on steel centred pallet roller with 25mm 6000 2RS ball bearings tread width 90mm. Load capacity 850kg.



Wheel Material	Polyurethane on Steel
Diameter (mm)	82
Load Capacity (kg)	850
Bearing Type	Ball
Bore Size (mm)	25
Tread (mm)	90
Hub Width (mm)	90
Colour / Shore Hardness	Brown Polyurethane on Steel Rim / 94 Shore A
Temperature Resistance	-20 °C TO +80 °C