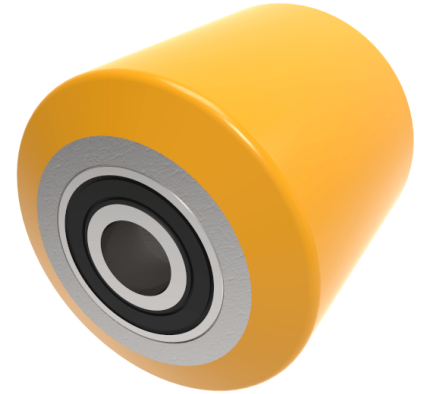


Polyurethane Cast Iron 85mm Ball Bearing Wheel 500kg Load

Product code: BZH8540WPTBJM20

85mm brown polyurethane tyred on steel centred pallet roller with 20mm 2RS ball bearings tread width 40mm. Load capacity 500kg. ****MANUFACTURED TO ORDER****



Wheel Material	Polyurethane on Steel
Diameter (mm)	85
Load Capacity (kg)	500
Bearing Type	Ball
Bore Size (mm)	20
Tread (mm)	40
Hub Width (mm)	40
Colour / Shore Hardness	Brown Polyurethane on Steel Rim / 94 Shore A
Temperature Resistance	-20 °C TO +80 °C

BIL GROUP LTD

Porte Marsh Road, Calne, Wiltshire, SN11 9BW

Registered in England No: 2603821

VAT Reg: GB572705729

