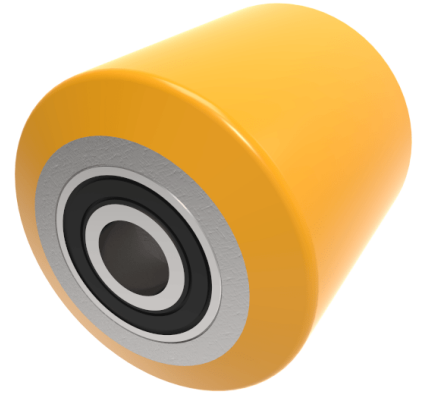


## Polyurethane Cast Iron 85mm Ball Bearing Wheel 850kg Load

**Product code: BZH8590WPTBJM25**

85mm brown polyurethane tyred on steel centred pallet roller with 25mm 2RS ball bearings tread width 90mm. Load capacity 850kg.



Wheel Material	Polyurethane on Steel
Diameter (mm)	85
Load Capacity (kg)	850
Bearing Type	Ball
Bore Size (mm)	25
Tread (mm)	90
Hub Width (mm)	90
Colour / Shore Hardness	Brown Polyurethane on Steel Rim / 94 Shore A
Temperature Resistance	-20 °C TO +80 °C

### BIL GROUP LTD

Porte Marsh Road, Calne, Wiltshire, SN11 9BW

Registered in England No: 2603821

VAT Reg: GB572705729

