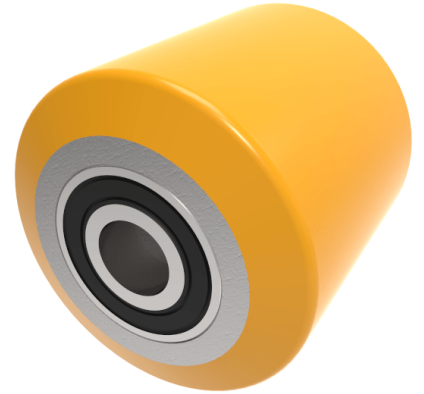


## Polyurethane Cast Iron 85mm Ball Bearing Wheel 950kg Load

**Product code: BZH85100WPTBJM25**

85mm brown polyurethane tyred on steel centred pallet roller with 25mm 2RS ball bearings tread width 100mm. Load capacity 950kg.



Wheel Material	Polyurethane on Cast Iron
Diameter (mm)	85
Load Capacity (kg)	950
Bearing Type	Ball
Bore Size (mm)	25
Tread (mm)	100
Hub Width (mm)	100
Colour / Shore Hardness	Brown Polyurethane on Steel Rim / 94 Shore A
Temperature Resistance	-20 °C TO +80 °C

### BIL GROUP LTD

Porte Marsh Road, Calne, Wiltshire, SN11 9BW

Registered in England No: 2603821

VAT Reg: GB572705729

