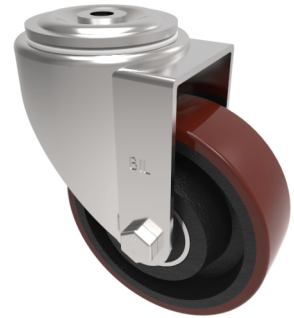


Polyurethane Cast Iron Bolt Hole Swivel Castor 125mm 400kg Load

Product code: BZWH125PTBJBH12

Pressed steel swivel castor with a 12mm bolt hole fitted with a brown polyurethane tyred on a cast iron centred wheel with ball bearings. Wheel diameter 125mm, tread width 50mm, overall height 165mm, Load capacity 400kg.



Diameter (mm)	125
Castor Type	Swivel
Fixing Option	Bolt Hole
Height (mm)	165
Wheel Material	Polyurethane on Cast Iron
Colour / Shore Hardness	Brown Polyurethane on Cast Iron Rim / 94 Shore A
Temperature Resistance	-20 °C TO +80 °C
Bearing Type	Ball
Load Capacity (kg)	400
Tread (mm)	50
Swivel Radius (mm)	105
Head Dia (mm)	76
Fork Thickness (mm)	3.5
To Suit Fixing Bolt (mm)	12