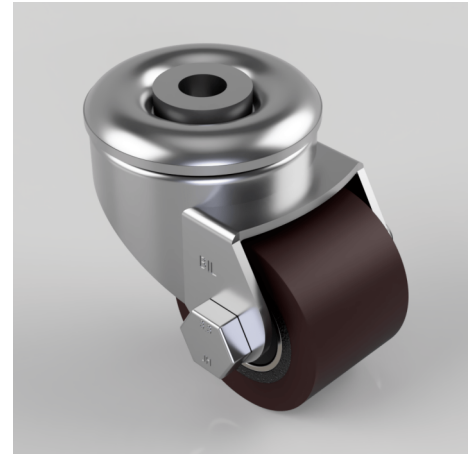


## Polyurethane Cast Iron Bolt Hole Swivel Castor 50mm 120kg Load

**Product code: BZLR50PTBJBH12**

Pressed steel swivel castor with a 12mm bolt hole fitted with a brown polyurethane tyred cast iron centred wheel with ball bearings. Wheel diameter 50mm, tread width 35mm, overall height 73mm, Load capacity 120kg.



Fixing Option	Bolt Hole
Castor Type	Swivel
Load Capacity (kg)	120
Wheel Material	Polyurethane on Cast Iron
Diameter (mm)	50
Bearing Type	Ball
Tread (mm)	35
Height (mm)	73
Swivel Radius (mm)	56
Colour / Shore Hardness	Brown Polyurethane on Cast Iron Rim / 94 Shore A
Fork Thickness (mm)	2.5
Fixing Bolt (mm)	12
Head Dia (mm)	60
Temperature Resistance	-20 °C TO +80 °C