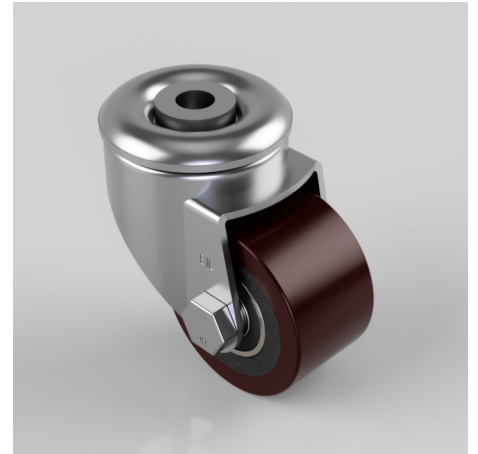


Polyurethane Cast Iron Bolt Hole Swivel Castor 60mm 180kg Load

Product code: BZLR60PTBJBH12

Pressed steel swivel castor with a 12mm bolt hole fitted with a brown polyurethane tyred cast iron centred wheel with ball bearing. Wheel diameter 60mm, tread width 35mm, overall height 85mm,. Load capacity 180kg.



Fixing Option	Bolt Hole
Castor Type	Swivel
Load Capacity (kg)	180
Wheel Material	Polyurethane on Cast Iron
Diameter (mm)	60
Bearing Type	Ball
Tread (mm)	35
Height (mm)	85
Swivel Radius (mm)	62
Colour / Shore Hardness	Brown Polyurethane on Cast Iron Rim / 94 Shore A
Fork Thickness (mm)	2.5
Fixing Bolt (mm)	12
Head Dia (mm)	60
Temperature Resistance	-20 °C TO +80 °C