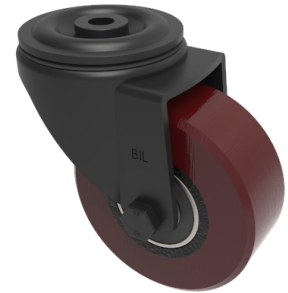


## Polyurethane Cast Iron Bolthole Swivel Castor 125mm 300kg Load

**Product code: BLKH125PTBJH12**



Pressed steel black painted swivel castor with a 12mm bolt hole fitted with a brown polyurethane tyred cast iron centred wheel with ball bearings. Wheel diameter 125mm, tread width 30mm, overall height 156mm, Load capacity 300kg. ( Catalogue SKU BLKH125PTBJH12)

Diameter (mm)	125
Castor Type	Swivel
Fixing Option	Bolt Hole
Height (mm)	155
Wheel Material	Polyurethane on Cast Iron
Colour / Shore Hardness	Brown Polyurethane on Cast Iron Rim / 94 Shore A
Temperature Resistance	-20 °C TO +80 °C
Bearing Type	Ball
Load Capacity (kg)	300
Tread (mm)	30
Swivel Radius (mm)	115
Head Dia (mm)	76
Fork Thickness (mm)	3
To Suit Fixing Bolt (mm)	12

### BIL GROUP LTD

Porte Marsh Road, Calne, Wiltshire, SN11 9BW

Registered in England No: 2603821

VAT Reg: GB572705729

