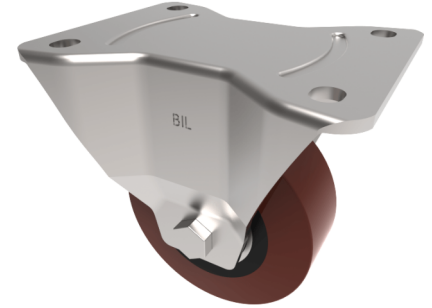


Polyurethane Cast Iron Plate Fixed Castor 100mm 300kg Load

Product code: BZPHF100PTBJ



Pressed steel fixed castor with a top plate fixing fitted with a polyurethane tyre on a cast iron centred wheel with ball bearings. Wheel diameter 100mm, tread width 40mm, overall height 129mm, top plate 135mm x 115mm, hole centres 105mm x 80/75mm. Load capacity 300kg.

Diameter (mm)	100
Castor Type	Fixed
Fixing Option	Plate
Height (mm)	132
Wheel Material	Polyurethane on Cast Iron
Colour / Shore Hardness	Brown Polyurethane on Cast Iron Rim / 94 Shore A
Temperature Resistance	-20 °C TO +80 °C
Bearing Type	Ball
Load Capacity (kg)	300
Tread (mm)	40
Plate Size (mm)	135 x 115
Hole Centres (mm)	105 x 80/75
Top Plate Thickness (mm)	4
Fork Thickness (mm)	4
To Suit Fixing Bolt (mm)	10

BIL GROUP LTD

Porte Marsh Road, Calne, Wiltshire, SN11 9BW

Registered in England No: 2603821

VAT Reg: GB572705729

