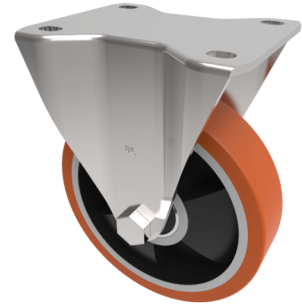


Polyurethane Cast Iron Plate Fixed Castor 100mm 300kg Load

Product code: BZEHF125PTBJ



Pressed steel fixed castor with a top plate fixing fitted with a brown polyurethane tyred on a cast iron centred wheel with ball bearings. Wheel diameter 125mm, tread width 30mm, overall height 155mm, top plate 105mm x 88mm, hole centres 80mm x 60mm. Load capacity 300kg.

Diameter (mm)	125
Castor Type	Fixed
Fixing Option	Plate
Height (mm)	128
Wheel Material	Polyurethane on Cast Iron
Colour / Shore Hardness	Brown Polyurethane on Cast Iron Rim / 94 Shore A
Temperature Resistance	-20 °C TO +80 °C
Bearing Type	Ball
Load Capacity (kg)	300
Tread (mm)	30
Plate Size (mm)	105 x 86
Hole Centres (mm)	80 X 60
Top Plate Thickness (mm)	3
Fork Thickness (mm)	3
To Suit Fixing Bolt (mm)	8