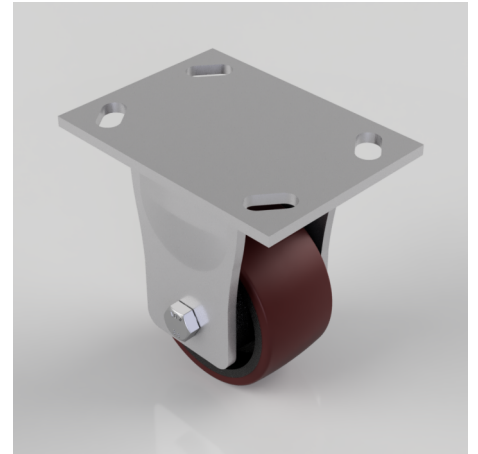


Polyurethane Cast Iron Plate Fixed Castor 100mm 400kg Load

Product code: BZKF100PTBJ/50

Fabricated fixed castor with a top plate fixing fitted with a brown polyurethane tyred on a cast iron centred wheel with a ball bearing. Wheel diameter 100mm, tread width 50mm, overall height 150mm, top plate 150mm x 110mm, hole centres 105mm x 80mm or 121mm x 59mm. Load capacity 400kg



Diameter (mm)	100
Fixing Option	Plate
Castor Type	Fixed
Bearing Type	Ball
Height (mm)	150
Plate Size (mm)	150 x 110
Hole Centres (mm)	105/121 x 80/59
To Suit Fixing Bolt (mm)	12
Wheel Material	Polyurethane on Cast Iron
Colour / Shore Hardness	Brown Polyurethane on Cast Iron Rim / 94 Shore A
Temperature Resistance	-20 °C TO +80 °C
Top Plate Thickness (mm)	6
Fork Thickness (mm)	6
Load Capacity (kg)	400
Tread (mm)	50

BIL GROUP LTD

Porte Marsh Road, Calne, Wiltshire, SN11 9BW

Registered in England No: 2603821

VAT Reg: GB572705729

