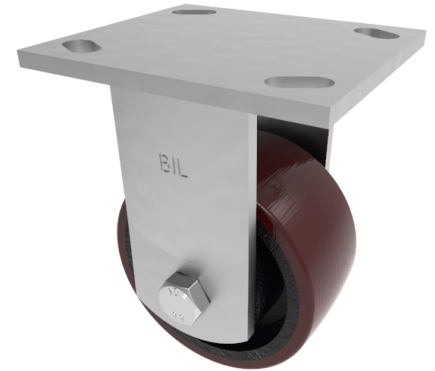


Polyurethane Cast Iron Plate Fixed Castor 100mm 400kg Load

Product code: BZJF100PTBJ/50/USA

Fabricated fixed castor with a top plate fixing fitted with a polyurethane tyred cast iron centred wheel with ball bearings. Wheel diameter 100mm, tread width 50mm, overall height 143mm, top plate 115mm x 102mm, hole centres 92mm x 67mm and 76mm x 76mm. Load capacity 400kg.



Diameter (mm)	100
Fixing Option	Plate
Castor Type	Fixed
Bearing Type	Ball
Height (mm)	143
Plate Size (mm)	115 x 102
Hole Centres (mm)	76/92 x 76/67
To Suit Fixing Bolt (mm)	10
Wheel Material	Polyurethane on Cast Iron
Colour / Shore Hardness	Brown Polyurethane on Cast Iron Rim / 94 Shore A
Temperature Resistance	-20 °C TO +80 °C
Top Plate Thickness (mm)	5.5
Fork Thickness (mm)	5.5
Load Capacity (kg)	400
Tread (mm)	50