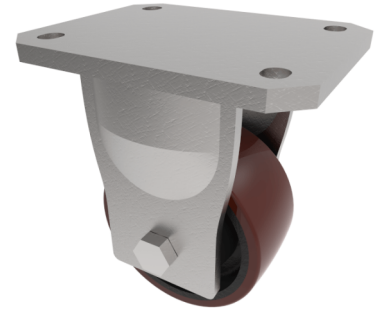


## Polyurethane Cast Iron Plate Fixed Castor 100mm 400kg Load

**Product code: BZSABF100PTBJ/50**

Fabricated zinc plated fixed castor with a top plate fixing fitted with a brown ergonomic polyurethane wheel on an aluminium centre with ball journal bearings. Wheel diameter 100mm, tread width 50mm, overall height 150mm, top plate 138mm x 110mm, hole centres 105mm x 80/75mmmm. Load capacity 350kg.



Diameter (mm)	100
Fixing Option	Plate
Castor Type	Fixed
Bearing Type	Ball
Height (mm)	150
Plate Size (mm)	138 x 110
Hole Centres (mm)	105 x 80
To Suit Fixing Bolt (mm)	10
Wheel Material	Polyurethane on Cast Iron
Colour / Shore Hardness	Brown Polyurethane on Cast Iron Rim / 94 Shore A
Temperature Resistance	-20 °C TO +80 °C
Top Plate Thickness (mm)	8
Fork Thickness (mm)	6
Load Capacity (kg)	400
Tread (mm)	50