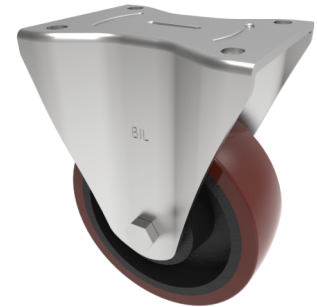


Polyurethane Cast Iron Plate Fixed Castor 125mm 400kg Load

Product code: BZXPF125PTBJ

Pressed steel fixed castor with a top plate fixing fitted with a brown polyurethane tyre on a cast iron centred wheel with ball bearings. Wheel diameter 125mm, tread width 40mm, overall height 165mm, top plate 105mm x 86mm, hole centres 80mm x 60mm. Load capacity 400kg.



| | |
|--------------------------|--|
| Diameter (mm) | 125 |
| Castor Type | Fixed |
| Fixing Option | Plate |
| Height (mm) | 165 |
| Wheel Material | Polyurethane on Cast Iron |
| Colour / Shore Hardness | Brown Polyurethane on Cast Iron Rim / 94 Shore A |
| Temperature Resistance | -20 °C TO +80 °C |
| Bearing Type | Ball |
| Load Capacity (kg) | 400 |
| Tread (mm) | 40 |
| Plate Size (mm) | 105 x 86 |
| Hole Centres (mm) | 80 / 77 X 60 |
| Top Plate Thickness (mm) | 6 |
| Fork Thickness (mm) | 5 |
| To Suit Fixing Bolt (mm) | 10 |

BIL GROUP LTD

Porte Marsh Road, Calne, Wiltshire, SN11 9BW

Registered in England No: 2603821

VAT Reg: GB572705729

