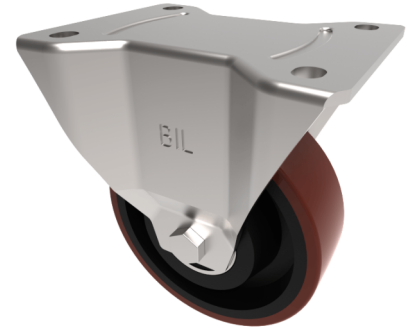


Polyurethane Cast Iron Plate Fixed Castor 125mm 400kg Load

Product code: BZPHF125PTBJ



Pressed steel fixed castor with a top plate fixing fitted with a Brown polyurethane tyre cast iron centred wheel with ball bearings. Wheel diameter 125mm, tread width 38mm, overall height 157mm, plate size 135mm x 110mm, hole centres 105mm x 80/75mm. Load capacity 400kg.

Diameter (mm)	125
Castor Type	Fixed
Fixing Option	Plate
Height (mm)	155
Wheel Material	Polyurethane on Cast Iron
Colour / Shore Hardness	Brown Polyurethane on Cast Iron Rim / 94 Shore A
Temperature Resistance	-20 °C TO +80 °C
Bearing Type	Ball
Load Capacity (kg)	400
Tread (mm)	38
Plate Size (mm)	135 x 115
Hole Centres (mm)	105 x 80/75
Top Plate Thickness (mm)	4
Fork Thickness (mm)	4
To Suit Fixing Bolt (mm)	10

BIL GROUP LTD

Porte Marsh Road, Calne, Wiltshire, SN11 9BW

Registered in England No: 2603821

VAT Reg: GB572705729

