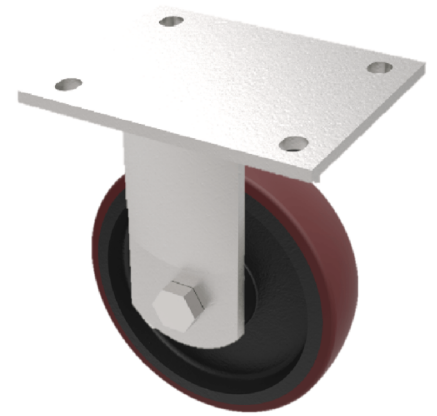


## Polyurethane Cast Iron Plate Fixed Castor 125mm 500kg Load

**Product code: BZSABF125PTBJ/50**

Fabricated yellow ROHS zinc plated fixed castor with plate fixing fitted with a brown polyurethane tyre cast iron centred wheel centred wheel with ball bearings. Wheel diameter 125mm, tread width 50mm, overall height 175mm, plate size 138mm x 110mm, hole centres 105mm x 80mm/75mm. Load capacity 500kg,



Diameter (mm)	125
Fixing Option	Plate
Castor Type	Fixed
Bearing Type	Ball
Height (mm)	175
Plate Size (mm)	138 x 110
Hole Centres (mm)	105 x 80
To Suit Fixing Bolt (mm)	10
Wheel Material	Polyurethane on Cast Iron
Colour / Shore Hardness	Brown Polyurethane on Cast Iron Rim / 94 Shore A
Temperature Resistance	-20 °C TO +80 °C
Top Plate Thickness (mm)	8
Fork Thickness (mm)	6
Load Capacity (kg)	500
Tread (mm)	50