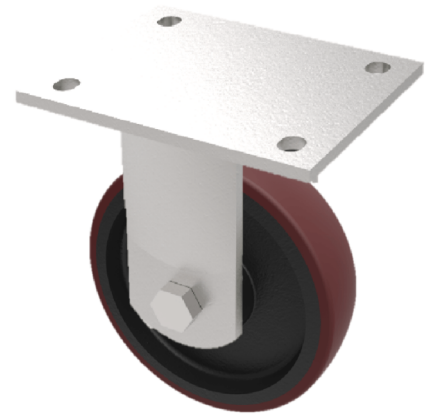


## Polyurethane Cast Iron Plate Fixed Castor 150mm 1000kg Load

**Product code: BZQF150PTBJ/60**

Fabricated fixed castors with a top plate fixing fitted with a polyurethane tyred cast iron centred wheel with ball bearings. Wheel diameter 150mm, tread width 60mm, overall height 212mm, top plate 175mm x 140mm, hole centres 140mm x 105mm. Load capacity 1000kg.



Diameter (mm)	150
Fixing Option	Plate
Castor Type	Fixed
Bearing Type	Ball
Height (mm)	212
Plate Size (mm)	175 X 140
Hole Centres (mm)	140 X 105
To Suit Fixing Bolt (mm)	14
Wheel Material	Polyurethane on Cast Iron
Colour / Shore Hardness	Brown Polyurethane on Cast Iron Rim / 94 Shore A
Temperature Resistance	-20 °C TO +80 °C
Top Plate Thickness (mm)	12
Fork Thickness (mm)	10
Load Capacity (kg)	1000
Tread (mm)	60

### BIL GROUP LTD

Porte Marsh Road, Calne, Wiltshire, SN11 9BW

Registered in England No: 2603821

VAT Reg: GB572705729

