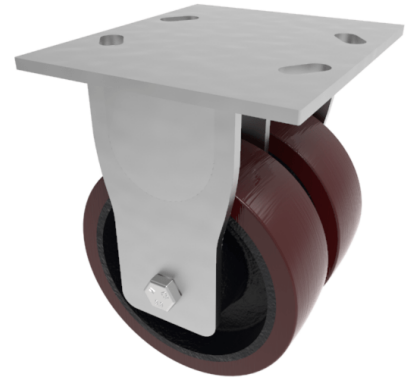


Polyurethane Cast Iron Plate Fixed Castor 150mm 1500kg Load

Product code: 2BZKF150PTBJ

Fabricated twin wheel fixed castor with a top plate fixing fitted with 2 x brown polyurethane tyred on a cast iron centred wheel with ball bearings. Wheel diameters 150mm, tread width 50mm x2, overall height 200mm, top plate 175mm x 150mm, hole centres 105mm x 80mm or 175mm x 150mm. Load capacity 1500kg.



Diameter (mm)	150
Fixing Option	Plate
Castor Type	Fixed
Bearing Type	Ball
Plate Size (mm)	175 x 150
Hole Centres (mm)	105/121 x 80/59
Height (mm)	200
To Suit Fixing Bolt (mm)	12
Wheel Material	Polyurethane on Cast Iron
Colour / Shore Hardness	Brown Polyurethane on Cast Iron Rim / 94 Shore A
Temperature Resistance	"-20 °C TO +80 °C
Tread (mm)	2 x 50
Load Capacity (kg)	1500
Top Plate Thickness (mm)	7.5
Fork Thickness (mm)	6