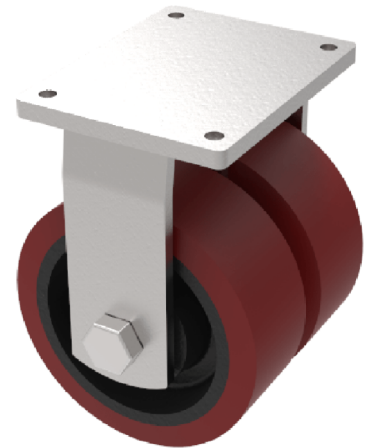


Polyurethane Cast Iron Plate Fixed Castor 150mm 1500kg Load

Product code: 2BZQF150PTBJ

Fabricated fixed castor with a flat plate fixing fitted with 2 x brown polyurethane tyred on cast iron centred wheels with roller bearings. Wheel diameter 150mm, tread width 50mm x 2, overall height 225mm, plate size 170mm x 140mm, hole centres 140mm x 105 mm. Load capacity 1500kg.



Diameter (mm)	150
Fixing Option	Plate
Castor Type	Fixed
Bearing Type	Ball
Plate Size (mm)	175 X 140
Hole Centres (mm)	140 X 105
Height (mm)	212
To Suit Fixing Bolt (mm)	14
Wheel Material	Polyurethane on Cast Iron
Colour / Shore Hardness	Brown Polyurethane on Cast Iron Rim / 94 Shore A
Temperature Resistance	"-20 °C TO +80 °C
Tread (mm)	2 x 50
Load Capacity (kg)	1500
Top Plate Thickness (mm)	12
Fork Thickness (mm)	8