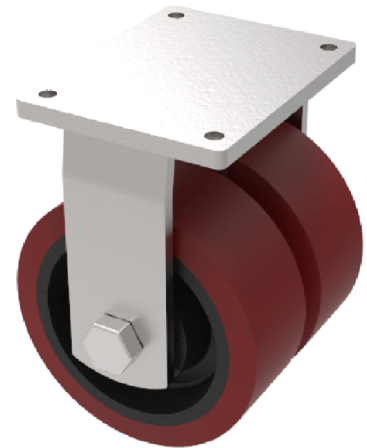


Polyurethane Cast Iron Plate Fixed Castor 150mm 2000kg Load

Product code: 2BZQF150PTBJ/60

Fabricated fixed castor with a flat plate fixing fitted with 2 x brown polyurethane tyred on cast iron centred wheels with roller bearings. Wheel diameter 150mm, tread width 60mm x 2, overall height 225mm, plate size 170mm x 140mm, hole centres 140mm x 105mm. Load capacity 2000kg.



Diameter (mm)	150
Fixing Option	Plate
Castor Type	Fixed
Bearing Type	Ball
Plate Size (mm)	175 X 140
Hole Centres (mm)	140 X 105
Height (mm)	212
To Suit Fixing Bolt (mm)	14
Wheel Material	Polyurethane on Cast Iron
Colour / Shore Hardness	Brown Polyurethane on Cast Iron Rim / 94 Shore A
Temperature Resistance	"-20 °C TO +80 °C
Tread (mm)	2 x 50
Load Capacity (kg)	2600
Top Plate Thickness (mm)	12
Fork Thickness (mm)	8

BIL GROUP LTD

Porte Marsh Road, Calne, Wiltshire, SN11 9BW

Registered in England No: 2603821

VAT Reg: GB572705729

