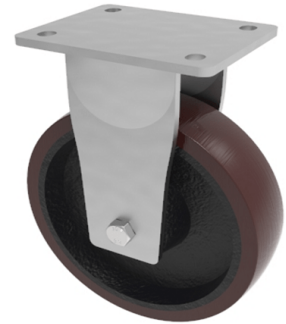


Polyurethane Cast Iron Plate Fixed Castor 200mm 1000kg Load

Product code: BZSABF200PTBJ

Fabricated yellow ROHS zinc plated fixed castor with plate fixing fitted with a brown polyurethane tyre cast iron center wheel with ball bearings. Wheel diameter 200mm, tread width 50mm, overall height 250mm, plate size 138mm x 110mm, hole Centres 105mm x 80mm/75mm. Load capacity 1000kg.



Diameter (mm)	200
Fixing Option	Plate
Castor Type	Fixed
Bearing Type	Ball
Height (mm)	250
Plate Size (mm)	138 x 110
Hole Centres (mm)	105 x 80
To Suit Fixing Bolt (mm)	10
Wheel Material	Polyurethane on Cast Iron
Colour / Shore Hardness	Brown Polyurethane on Cast Iron Rim / 94 Shore A
Temperature Resistance	-20 °C TO +80 °C
Top Plate Thickness (mm)	8
Fork Thickness (mm)	6
Load Capacity (kg)	1000
Tread (mm)	50