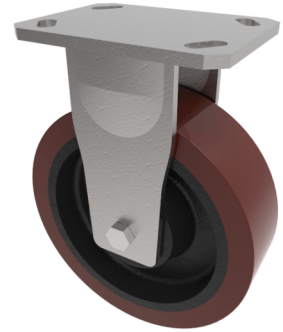


## Polyurethane Cast Iron Plate Fixed Castor 200mm 1300kg Load

**Product code: BZKF200PTBJ/WT**



Fabricated fixedl castor with top plte fixing fitted with a polyurethane tyre on a cast iron centred wheel with ball bearings. Wheel diameter 200mm, tread width 60mm, overall height 250mm, top plate 150mm x 110mm, hole centres 105mm x 80mm or 121mm x 59mm. Load capacity 1300kg. (Catalogue SKU BZKF200PTBJ/60)

Diameter (mm)	200
Fixing Option	Plate
Castor Type	Fixed
Bearing Type	Ball
Height (mm)	250
Plate Size (mm)	150 x 110
Hole Centres (mm)	105/121 x 80/59
To Suit Fixing Bolt (mm)	12
Wheel Material	Polyurethane on Cast Iron
Colour / Shore Hardness	Brown Polyurethane on Cast Iron Rim / 94 Shore A
Temperature Resistance	-20 °C TO +80 °C
Top Plate Thickness (mm)	7.5
Fork Thickness (mm)	6
Load Capacity (kg)	1300
Tread (mm)	60

### BIL GROUP LTD

Porte Marsh Road, Calne, Wiltshire, SN11 9BW

Registered in England No: 2603821

VAT Reg: GB572705729

