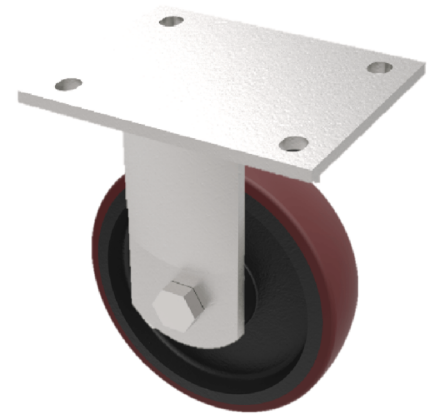


Polyurethane Cast Iron Plate Fixed Castor 200mm 1600kg Load

Product code: BZQFX200PTBJ

Fabricated fixed castor with a top plate fixing fitted with a brown polyurethane tyre cast iron centred wheel with ball bearings. Wheel diameter 200mm, tread width 75mm, overall height 264mm, top plate 200mm x 160mm, hole centres 160mm x 120mm. Load capacity 1600kg.



Diameter (mm)	200
Fixing Option	Plate
Castor Type	Fixed
Bearing Type	Ball
Height (mm)	264
Plate Size (mm)	200 X 160
Hole Centres (mm)	160 X 120
To Suit Fixing Bolt (mm)	16
Wheel Material	Polyurethane on Cast Iron
Colour / Shore Hardness	Brown Polyurethane on Cast Iron Rim / 94 Shore A
Temperature Resistance	-20 °C TO +80 °C
Top Plate Thickness (mm)	16
Fork Thickness (mm)	10
Load Capacity (kg)	1600
Tread (mm)	75