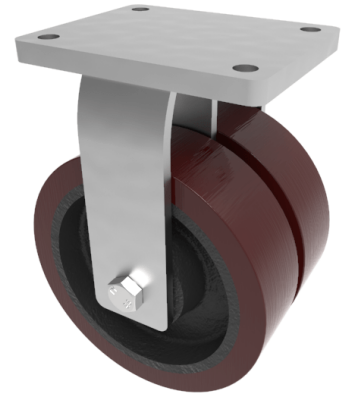


Polyurethane Cast Iron Plate Fixed Castor 200mm 2600kg Load

Product code: 2BZQF200PTBJ/60

Twin wheeled fixed castor with a top plate fixing fitted with 2 brown polyurethane wheels on cast iron centres with ball journal bearings. Wheel diameter 2 x 200mm, tread width 2 x 60mm, overall height 264mm, top plate 175mm x 140mm, hole centres 140mm x 105. Load capacity 2600kg.



Diameter (mm)	200
Fixing Option	Plate
Castor Type	Fixed
Bearing Type	Ball
Plate Size (mm)	175 X 140
Hole Centres (mm)	140 X 105
Height (mm)	264
To Suit Fixing Bolt (mm)	14
Wheel Material	Polyurethane on Cast Iron
Colour / Shore Hardness	Brown Polyurethane on Cast Iron Rim / 94 Shore A
Temperature Resistance	"-20 °C TO +80 °C
Tread (mm)	2 x 50
Load Capacity (kg)	2600
Top Plate Thickness (mm)	12
Fork Thickness (mm)	8