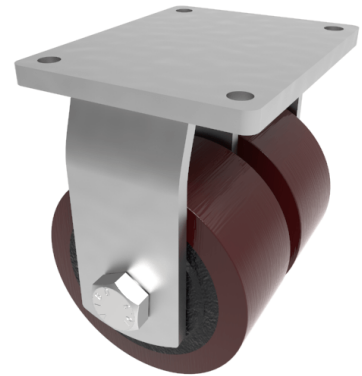


Polyurethane Cast Iron Plate Fixed Castor 200mm 4000kg Load

Product code: 2BZXXHF200PTBJ

Fabricated fixed castor fitted with a top plate, 2 x 200mm overall diameter polyurethane on cast iron wheels, fitted with ball journal bearings, 2 x 100mm tread width, 280mm overall height, 255 x 200mm top plate, 210 x 160mm bolt holes, with a load capacity of 4000kgs.



Diameter (mm)	200
Fixing Option	Plate
Castor Type	Fixed
Bearing Type	Ball
Plate Size (mm)	255 X 200
Hole Centres (mm)	210 X 160
Height (mm)	280
To Suit Fixing Bolt (mm)	16
Wheel Material	Polyurethane on Cast Iron
Colour / Shore Hardness	Brown Polyurethane on Cast Iron Rim / 94 Shore A
Temperature Resistance	"-20 °C TO +80 °C
Tread (mm)	2 x 100
Load Capacity (kg)	4000
Top Plate Thickness (mm)	16
Fork Thickness (mm)	12

BIL GROUP LTD

Porte Marsh Road, Calne, Wiltshire, SN11 9BW

Registered in England No: 2603821

VAT Reg: GB572705729

