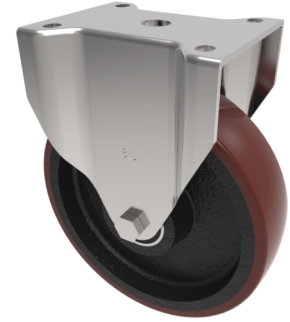


## Polyurethane Cast Iron Plate Fixed Castor 200mm 500kg Load

**Product code: BZPHF200PTBJ**



Pressed steel fixed castor with a top plate fitted with a brown polyurethane tyred cast iron centred ball bearing wheel. Wheel diameter 200mm, tread width 50mm, overall height 238mm, plate size 135mm x 115mm, hole centres 105mm x 80/75mm. Load capacity 500kg.

Diameter (mm)	200
Castor Type	Fixed
Fixing Option	Plate
Height (mm)	238
Wheel Material	Polyurethane on Cast Iron
Colour / Shore Hardness	Brown Polyurethane on Cast Iron Rim / 94 Shore A
Temperature Resistance	-20 °C TO +80 °C
Bearing Type	Ball
Load Capacity (kg)	500
Tread (mm)	50
Plate Size (mm)	135 x 115
Hole Centres (mm)	105 x 80/75
Top Plate Thickness (mm)	4
Fork Thickness (mm)	4
To Suit Fixing Bolt (mm)	10