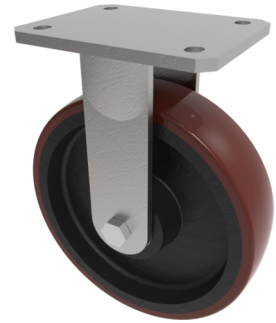


## Polyurethane Cast Iron Plate Fixed Castor 200mm 600kg Load

**Product code: BZMJF200PTBJ**

Fabricated white zinc ROHS plated fixed castor with a top plate fixing fitted with a polyurethane wheel on a cast iron centre with ball bearings. Wheel diameter 200mm, tread width 50mm, overall height 240mm, top plate 138mm x 110mm, hole centres 105mm x 80mm/75mm. Load capacity 600kg.



Diameter (mm)	200
Fixing Option	Plate
Castor Type	Fixed
Bearing Type	Ball
Height (mm)	241
Plate Size (mm)	138 x 110
Hole Centres (mm)	105 x 80/75
To Suit Fixing Bolt (mm)	10
Wheel Material	Polyurethane on Cast Iron
Colour / Shore Hardness	Brown Polyurethane on Cast Iron Rim / 94 Shore A
Temperature Resistance	-20 °C TO +80 °C
Top Plate Thickness (mm)	7
Fork Thickness (mm)	6
Load Capacity (kg)	600
Tread (mm)	50