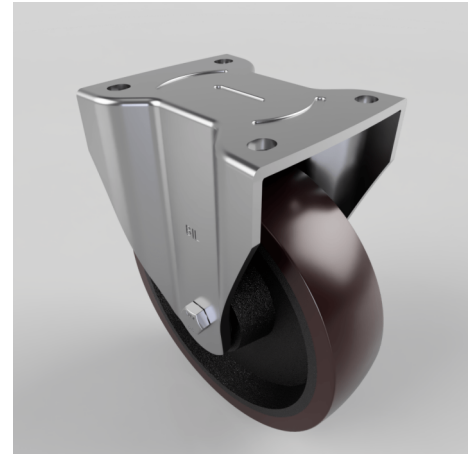


## Polyurethane Cast Iron Plate Fixed Castor 200mm 700kg Load

**Product code: BZSPHF200PTBJ**

Pressed steel fixed castor with a top plate fitted with a brown polyurethane tyred cast iron centred ball bearing wheel. Wheel diameter 200mm, tread width 50mm, overall height 238mm, plate size 135mm x 115mm, hole centres 105mm x 80/75mm. Load capacity 700kg.



|                          |  |
|--------------------------|--|
| Diameter (mm)            | 200  |
| Castor Type              | Fixed  |
| Fixing Option            | Plate  |
| Height (mm)              | 238  |
| Wheel Material           | Polyurethane on Cast Iron                        |
| Colour / Shore Hardness  | Brown Polyurethane on Cast Iron Rim / 94 Shore A |
| Temperature Resistance   | -20 °C TO +80 °C                                 |
| Bearing Type             | Ball   |
| Load Capacity (kg)       | 700  |
| Tread (mm)               | 50   |
| Plate Size (mm)          | 135 x 115  |
| Hole Centres (mm)        | 105 x 80/75                                      |
| Top Plate Thickness (mm) | 5  |
| Fork Thickness (mm)      | 5  |
| To Suit Fixing Bolt (mm) | 10   |

### BIL GROUP LTD

Porte Marsh Road, Calne, Wiltshire, SN11 9BW

Registered in England No: 2603821

VAT Reg: GB572705729

