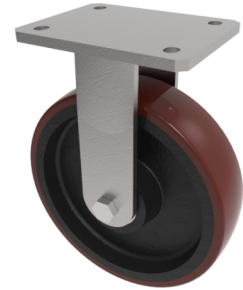


Polyurethane Cast Iron Plate Fixed Castor 200mm 900kg Load

Product code: BZKFL200PTBJ



Fabricated fixed castor with a flat plate fixing fitted with a brown polyurethane tyred on cast iron centre wheel with ball bearings. Wheel diameter 200mm, tread width 50mm, overall height 245mm, plate size 138mm x 110mm, hole centres 105mm x 80mm/75mm. Load capacity 900kg. NB the BIL catalouge is incorrect overall height is 245mm.

| | |
|--------------------------|--|
| Diameter (mm) | 200 |
| Fixing Option | Plate |
| Castor Type | Fixed |
| Bearing Type | Ball |
| Height (mm) | 245 |
| Plate Size (mm) | 138 x 110 |
| Hole Centres (mm) | 105 x 80/75 |
| To Suit Fixing Bolt (mm) | 10 |
| Wheel Material | Polyurethane on Cast Iron |
| Colour / Shore Hardness | Brown Polyurethane on Cast Iron Rim / 94 Shore A |
| Temperature Resistance | -20 °C TO +80 °C |
| Top Plate Thickness (mm) | 7.5 |
| Fork Thickness (mm) | 6 |
| Load Capacity (kg) | 900 |
| Tread (mm) | 50 |

BIL GROUP LTD

Porte Marsh Road, Calne, Wiltshire, SN11 9BW

Registered in England No: 2603821

VAT Reg: GB572705729

