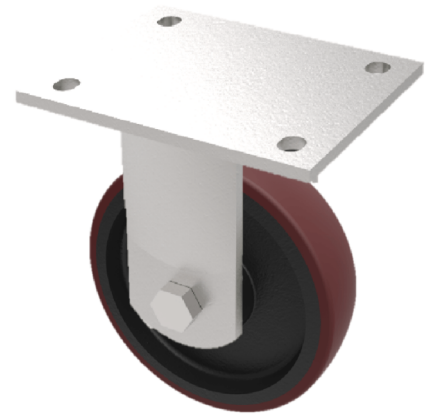


Polyurethane Cast Iron Plate Fixed Castor 250mm 1800kg Load

Product code: BZQF250PTBJ

Fabricated fixed castor with a flat plate fixing fitted with a brown polyurethane tyre on cast iron centred wheel with a ball bearing. Wheel diameter 250mm, tread width 75mm, overall height 314mm, plate size 175mm x 140mm, hole centres 140mm x 105mm. Load capacity 1800kg.



| | |
|--------------------------|--|
| Diameter (mm) | 250 |
| Fixing Option | Plate |
| Castor Type | Fixed |
| Bearing Type | Ball |
| Height (mm) | 314 |
| Plate Size (mm) | 175 X 140 |
| Hole Centres (mm) | 140 X 105 |
| To Suit Fixing Bolt (mm) | 14 |
| Wheel Material | Polyurethane on Cast Iron |
| Colour / Shore Hardness | Brown Polyurethane on Cast Iron Rim / 94 Shore A |
| Temperature Resistance | -20 °C TO +80 °C |
| Top Plate Thickness (mm) | 12 |
| Fork Thickness (mm) | 10 |
| Load Capacity (kg) | 1800 |
| Tread (mm) | 75 |

BIL GROUP LTD

Porte Marsh Road, Calne, Wiltshire, SN11 9BW

Registered in England No: 2603821

VAT Reg: GB572705729

