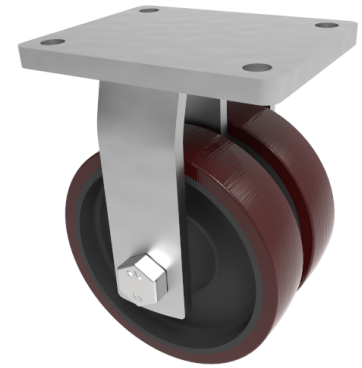


Polyurethane Cast Iron Plate Fixed Castor 250mm 3600kg Load

Product code: 2BZQFXL250PTBJ



Fabricated twin wheeled fixed castor fitted with 2 X polyurethane tyred wheels with cast iron centres and ball bearings. Wheel diameter 250mm, Tread width 75 + 75mm, Overall height 314mm, Top plate 200mm x 160mm, Hole centres 160mm x 120mm, Load capacity 3600kg

Diameter (mm)	250
Fixing Option	Plate
Castor Type	Fixed
Bearing Type	Ball
Plate Size (mm)	200 X 160
Hole Centres (mm)	160 X 120
Height (mm)	314
To Suit Fixing Bolt (mm)	16
Wheel Material	Polyurethane on Cast Iron
Colour / Shore Hardness	Brown Polyurethane on Cast Iron Rim / 94 Shore A
Temperature Resistance	"-20 °C TO +80 °C
Tread (mm)	2 x 60
Load Capacity (kg)	3600
Top Plate Thickness (mm)	16
Fork Thickness (mm)	10

BIL GROUP LTD

Porte Marsh Road, Calne, Wiltshire, SN11 9BW

Registered in England No: 2603821

VAT Reg: GB572705729

