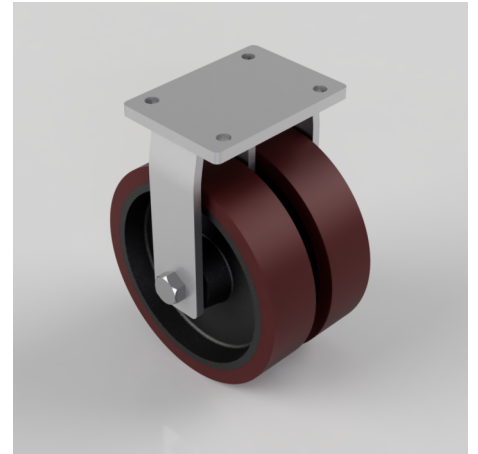


Polyurethane Cast Iron Plate Fixed Castor 300mm 4400kg Load

Product code: 2BZQFX300PTBJ

Twin wheeled fixed castor with a top plate fixing fitted with 2 brown polyurethane wheels on cast iron centres with ball bearings. Wheel diameter 2 x 300mm, tread width 2 x 75mm, overall height 375mm, top plate 220mm x 160mm, hole centres 160mm x 120mm. Load capacity 4400kg.



| | |
|--------------------------|--|
| Diameter (mm) | 300 |
| Fixing Option | Plate |
| Castor Type | Fixed |
| Bearing Type | Ball |
| Plate Size (mm) | 220 X 160 |
| Hole Centres (mm) | 160 X 120 |
| Height (mm) | 375 |
| To Suit Fixing Bolt (mm) | 16 |
| Wheel Material | Polyurethane on Cast Iron |
| Colour / Shore Hardness | Brown Polyurethane on Cast Iron Rim / 94 Shore A |
| Temperature Resistance | "-20 °C TO +80 °C |
| Tread (mm) | 2 x 75 |
| Load Capacity (kg) | 4400 |
| Top Plate Thickness (mm) | 16 |
| Fork Thickness (mm) | 12 |

BIL GROUP LTD

Porte Marsh Road, Calne, Wiltshire, SN11 9BW

Registered in England No: 2603821

VAT Reg: GB572705729

