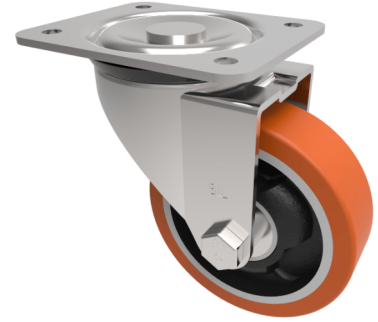


Polyurethane Cast Iron Plate Swivel Castor 100mm 250kg Load

Product code: BZEH100PTBJLP



Pressed steel swivel castor with a top plate fixing fitted with a brown polyurethane tyred cast iron centred wheel with ball bearings. Wheel diameter 100mm, tread width 30mm, overall height 129mm, plate size 135mm x 110mm, hole centres 105mm x 80mm or 116mm x 93.5mm. Load capacity 250kg.

Diameter (mm)	100
Castor Type	Swivel
Fixing Option	Plate
Height (mm)	128
Wheel Material	Polyurethane on Cast Iron
Colour / Shore Hardness	Brown Polyurethane on Cast Iron Rim / 94 Shore A
Temperature Resistance	-20 °C TO +80 °C
Bearing Type	Ball
Load Capacity (kg)	250
Tread (mm)	30
Swivel Radius (mm)	90
Plate Size (mm)	135 x 110
Hole Centres (mm)	105/116 x 80/64
Top Plate Thickness (mm)	3
Fork Thickness (mm)	3
To Suit Fixing Bolt (mm)	10

BIL GROUP LTD

Porte Marsh Road, Calne, Wiltshire, SN11 9BW

Registered in England No: 2603821

VAT Reg: GB572705729

