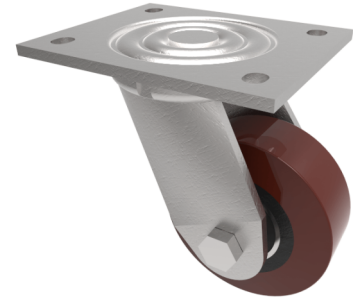


Polyurethane Cast Iron Plate Swivel Castor 100mm 300kg Load

Product code: BZJ100PTBJ



Fabricated swivel castor with top plate fixing fitted with brown polyurethane tyre on cast iron centred wheel with ball bearing. Wheel diameter 100mm, tread width 40mm, overall height 143mm plate size 135mm x 110mm, hole centers 105mm x 80mm. Load capacity 300kg.

| | |
|--------------------------|--|
| Diameter (mm) | 100 |
| Fixing Option | Plate |
| Castor Type | Swivel |
| Bearing Type | Ball |
| Height (mm) | 143 |
| Plate Size (mm) | 135 x 110 |
| Hole Centres (mm) | 105 x 80 |
| To Suit Fixing Bolt (mm) | 10 |
| Wheel Material | Polyurethane on Cast Iron |
| Colour / Shore Hardness | Brown Polyurethane on Cast Iron Rim / 94 Shore A |
| Temperature Resistance | -20 °C TO +80 °C |
| Top Plate Thickness (mm) | 5.5 |
| Fork Thickness (mm) | 5.5 |
| Swivel Radius (mm) | 90 |
| Load Capacity (kg) | 300 |
| Tread (mm) | 40 |

BIL GROUP LTD

Porte Marsh Road, Calne, Wiltshire, SN11 9BW

Registered in England No: 2603821

VAT Reg: GB572705729

