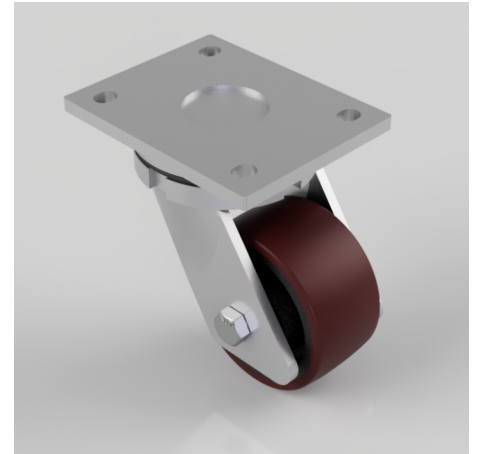


Polyurethane Cast Iron Plate Swivel Castor 100mm 400kg Load

Product code: BZSAB100PTBJ/50

Fabricated yellow ROHS zinc plated swivel castor with plate fixing fitted with a brown polyurethane tyre cast iron centred wheel centred wheel with ball bearings. Wheel diameter 100mm, tread width 50mm, overall height 150mm, plate size 138mm x 110mm, hole centres 105mm x 80mm/75mm. Load capacity 400kg,



Diameter (mm)	100
Fixing Option	Plate
Castor Type	Swivel
Bearing Type	Ball
Height (mm)	150
Plate Size (mm)	138 x 110
Hole Centres (mm)	105 x 80/75
To Suit Fixing Bolt (mm)	10
Wheel Material	Polyurethane on Cast Iron
Colour / Shore Hardness	Brown Polyurethane on Cast Iron Rim / 94 Shore A
Temperature Resistance	-20 °C TO +80 °C
Top Plate Thickness (mm)	8
Fork Thickness (mm)	6
Swivel Radius (mm)	96
Load Capacity (kg)	400
Tread (mm)	50