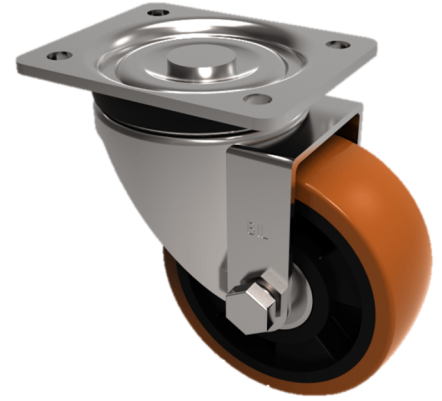


Polyurethane Cast Iron Plate Swivel Castor 125mm 250kg Load

Product code: BZEH125PTBJ/40

Pressed steel swivel castor with a top plate fixing fitted with a brown polyurethane tyred on a cast iron centred wheel with ball bearings. Wheel diameter 125mm, tread width 40mm, overall height 155mm, top plate 105mm x 86mm, hole centres 80mm x 60mm. Load capacity 300kg.



Diameter (mm)	125
Castor Type	Swivel
Fixing Option	Plate
Height (mm)	155
Wheel Material	Polyurethane on Cast Iron
Colour / Shore Hardness	Brown Polyurethane on Cast Iron Rim / 94 Shore A
Temperature Resistance	-20 °C TO +80 °C
Bearing Type	Ball
Load Capacity (kg)	250
Tread (mm)	40
Swivel Radius (mm)	104
Plate Size (mm)	105 x 86
Hole Centres (mm)	80 X 60
Top Plate Thickness (mm)	3
Fork Thickness (mm)	3
To Suit Fixing Bolt (mm)	8

BIL GROUP LTD

Porte Marsh Road, Calne, Wiltshire, SN11 9BW

Registered in England No: 2603821

VAT Reg: GB572705729

