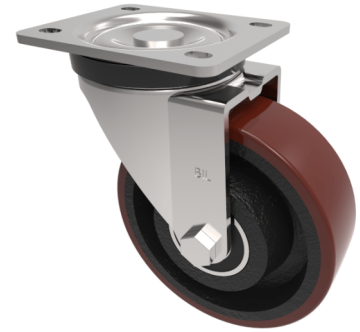


## Polyurethane Cast Iron Plate Swivel Castor 125mm 500kg Load

**Product code: BZWH125PTBJLP/50**



Pressed steel swivel castor with a top plate fixing fitted with a brown polyurethane tyred on a cast iron centred wheel with ball bearings. Wheel diameter 125mm, tread width 50mm, overall height 165mm, top plate 135mm x 110mm, hole centres 105mm x 80mm. Load capacity 500kg.

Diameter (mm)	125
Castor Type	Swivel
Fixing Option	Plate
Height (mm)	166
Wheel Material	Polyurethane on Cast Iron
Colour / Shore Hardness	Brown Polyurethane on Cast Iron Rim / 94 Shore A
Temperature Resistance	-20 °C TO +80 °C
Bearing Type	Ball
Load Capacity (kg)	500
Tread (mm)	50
Swivel Radius (mm)	105
Plate Size (mm)	135 x 110
Hole Centres (mm)	105 x 80/75
Top Plate Thickness (mm)	4
Fork Thickness (mm)	3.5
To Suit Fixing Bolt (mm)	10

### BIL GROUP LTD

Porte Marsh Road, Calne, Wiltshire, SN11 9BW

Registered in England No: 2603821

VAT Reg: GB572705729

