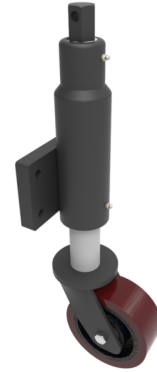


Polyurethane Cast Iron Plate Swivel Castor 150mm 1000kg Load

Product code: JAZXXHK150PTBJ/60

Fabricated 75mm lift swivel jacking bracket with fixing plate fitted with a brown polyurethane tyred cast iron centred wheel with ball bearings. Wheel diameter 150mm, tread width 60mm, overall height 570mm, plate size 152mm x 106mm, hole centres 114mm x 64mm Load capacity 1000kg. (Catalogue SKU JAZXXHK150PTBJ/WT)



| | |
|--------------------------|--|
| Diameter (mm) | 150 |
| Height (mm) | 570 |
| Castor Type | Swivel |
| Swivel Radius (mm) | 129 |
| Fixing Option | Plate |
| Bearing Type | Ball |
| To Suit Fixing Bolt (mm) | 12 |
| Wheel Material | Polyurethane on Cast Iron |
| Colour / Shore Hardness | Brown Polyurethane on Cast Iron Rim / 94 Shore A |
| Temperature Resistance | -20 °C TO +80 °C |
| Load Capacity (kg) | 1000 |
| Tread (mm) | 60 |
| Lifting Stroke (mm) | 75 |

BIL GROUP LTD

Porte Marsh Road, Calne, Wiltshire, SN11 9BW

Registered in England No: 2603821

VAT Reg: GB572705729

