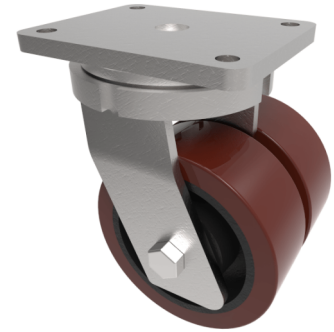


Polyurethane Cast Iron Plate Swivel Castor 150mm 2000kg Load

Product code: 2BZQ150PTBJ/60

Fabricated swivel castor with a flat plate fixing fitted with 2 x brown polyurethane tyred on cast iron centred wheels with ball bearings. Wheel diameter 150mm, tread width 60mm x 2 overall height 225mm, plate size 170mm x 140mm, hole centres 140mm x 105mm. Load capacity 2000kg.



| | |
|--------------------------|--|
| Diameter (mm) | 150 |
| Fixing Option | Plate |
| Castor Type | Swivel |
| Bearing Type | Ball |
| Plate Size (mm) | 175 X 140 |
| Hole Centres (mm) | 140 X 105 |
| Height (mm) | 212 |
| Swivel Radius (mm) | 140 |
| To Suit Fixing Bolt (mm) | 14 |
| Wheel Material | Polyurethane on Cast Iron |
| Colour / Shore Hardness | Brown Polyurethane on Cast Iron Rim / 94 Shore A |
| Temperature Resistance | "-20 °C TO +80 °C |
| Tread (mm) | 2 x 60 |
| Load Capacity (kg) | 2600 |
| Top Plate Thickness (mm) | 12 |
| Fork Thickness (mm) | 8 |