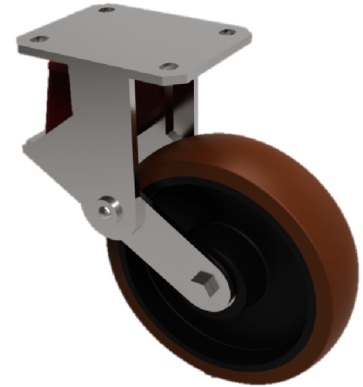


## Polyurethane Cast Iron Plate Swivel Castor 150mm 200kg Load

**Product code: BZKL150PTBJSPR200**

Fabricated swivel castor with top plate fixing fitted with a 150mm x 50mm brown polyurethane tyred cast iron centred wheel with ball bearings overall height 183mm/203mm, plate size 138mm x 110mm, hole centres 105mm x 80mm. Load capacity 200kg black rubber spring.max speed 4kph



Diameter (mm)	150
Fixing Option	Plate
Castor Type	Swivel
Bearing Type	Ball
Height (mm)	195
Plate Size (mm)	138 x 110
Hole Centres (mm)	105 x 80
To Suit Fixing Bolt (mm)	10
Wheel Material	Polyurethane on Cast Iron
Colour / Shore Hardness	Brown Polyurethane on Cast Iron Rim / 94 Shore A
Temperature Resistance	-20 °C TO +80 °C
Top Plate Thickness (mm)	7.5
Fork Thickness (mm)	6
Swivel Radius (mm)	137
Load Capacity (kg)	200
Tread (mm)	50

### BIL GROUP LTD

Porte Marsh Road, Calne, Wiltshire, SN11 9BW

Registered in England No: 2603821

VAT Reg: GB572705729

