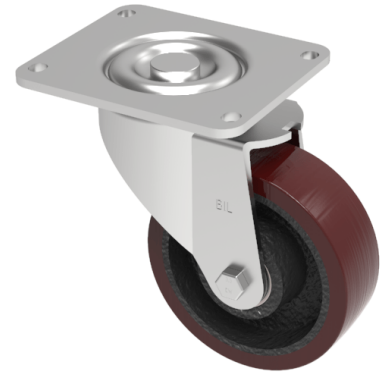


Polyurethane Cast Iron Plate Swivel Castor 160mm 750kg Load

Product code: BZXP160PTBJLP

Pressed steel swivel castor with a top plate fixing fitted with a brown polyurethane tyre cast iron centred wheel with ball bearings. Wheel diameter 160mm, tread width 50mm, overall height 205mm, top plate 175mm x 140mm, hole centres 140mm x 105mm. Load capacity 750kg.



Diameter (mm)	160
Castor Type	Swivel
Fixing Option	Plate
Height (mm)	205
Wheel Material	Polyurethane on Cast Iron
Colour / Shore Hardness	Brown Polyurethane on Cast Iron Rim / 94 Shore A
Temperature Resistance	-20 °C TO +80 °C
Bearing Type	Ball
Load Capacity (kg)	750
Tread (mm)	50
Swivel Radius (mm)	145
Plate Size (mm)	162 X 140
Hole Centres (mm)	140 X 105
Top Plate Thickness (mm)	6
Fork Thickness (mm)	5
To Suit Fixing Bolt (mm)	10

BIL GROUP LTD

Porte Marsh Road, Calne, Wiltshire, SN11 9BW

Registered in England No: 2603821

VAT Reg: GB572705729

