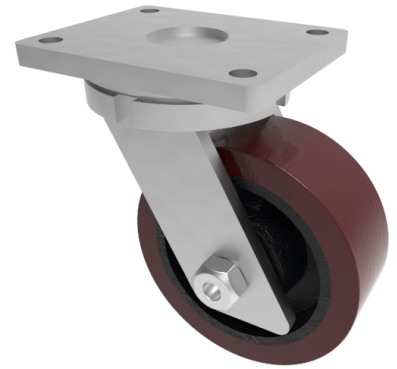


Polyurethane Cast Iron Plate Swivel Castor 200mm 1600kg Load

Product code: BZQX200PTBJ

Fabricated swivel castor with a top plate fixing fitted with a brown polyurethane tyre cast iron centred wheel with ball bearings. Wheel diameter 200mm, tread width 75mm, overall height 264mm, top plate 200mm x 160mm, hole centres 160mm x 120mm. Load capacity 1600kg.



Diameter (mm)	200
Fixing Option	Plate
Castor Type	Swivel
Bearing Type	Ball
Height (mm)	264
Plate Size (mm)	200 X 160
Hole Centres (mm)	160 X 120
To Suit Fixing Bolt (mm)	16
Wheel Material	Polyurethane on Cast Iron
Colour / Shore Hardness	Brown Polyurethane on Cast Iron Rim / 94 Shore A
Temperature Resistance	-20 °C TO +80 °C
Top Plate Thickness (mm)	16
Fork Thickness (mm)	12
Swivel Radius (mm)	165
Load Capacity (kg)	1600
Tread (mm)	75

BIL GROUP LTD

Porte Marsh Road, Calne, Wiltshire, SN11 9BW

Registered in England No: 2603821

VAT Reg: GB572705729

