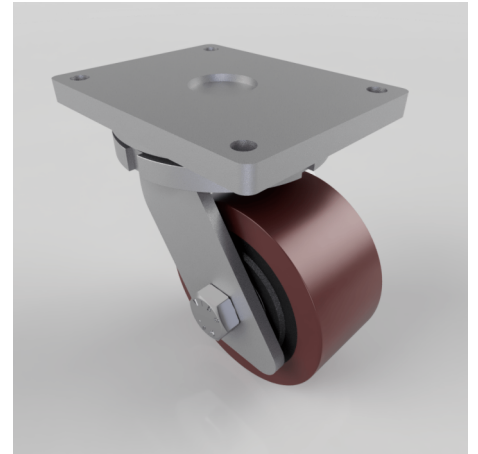


Polyurethane Cast Iron Plate Swivel Castor 200mm 2000kg Load

Product code: BZQXX200PTBJ

Fabricated swivel castor with a top plate fixing fitted with a brown polyurethane tyre on a cast iron centred ball bearing wheel. Wheel diameter 200mm, tread width 100mm, overall height 280mm, top plate 255mm x 200mm, hole centres 210mm x 160. Load capacity 2000kg.



Diameter (mm)	200
Fixing Option	Plate
Castor Type	Swivel
Bearing Type	Ball
Height (mm)	280
Plate Size (mm)	255 X 200
Hole Centres (mm)	210 X 160
To Suit Fixing Bolt (mm)	16
Wheel Material	Polyurethane on Cast Iron
Colour / Shore Hardness	Brown Polyurethane on Cast Iron Rim / 94 Shore A
Temperature Resistance	-20 °C TO +80 °C
Top Plate Thickness (mm)	21
Fork Thickness (mm)	12
Swivel Radius (mm)	172
Load Capacity (kg)	2000
Tread (mm)	100