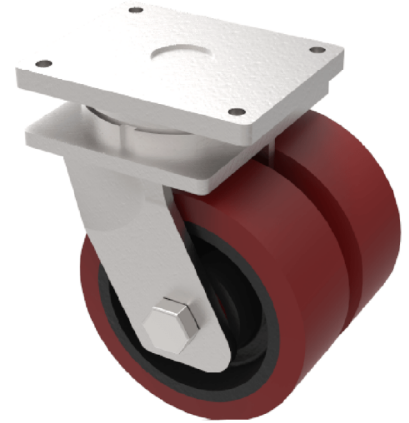


Polyurethane Cast Iron Plate Swivel Castor 200mm 2600kg Load

Product code: 2BZQXL200PTBJ/60

Fabricated steel, swivel castor fitted with a polyurethane on cast iron centred wheel, with ball journal bearings, 200mm overall wheel diameter, 2 x 60mm tread width, 264mm overall height, 200 x 160mm top plate, 160 x 120mm bolt holes, with a load capacity of 2600kgs



Diameter (mm)	200
Fixing Option	Plate
Castor Type	Swivel
Bearing Type	Ball
Plate Size (mm)	200 X 160
Hole Centres (mm)	160 X 120
Height (mm)	264
Swivel Radius (mm)	175
To Suit Fixing Bolt (mm)	16
Wheel Material	Polyurethane on Cast Iron
Colour / Shore Hardness	Brown Polyurethane on Cast Iron Rim / 94 Shore A
Temperature Resistance	"-20 °C TO +80 °C
Tread (mm)	2 x 60
Load Capacity (kg)	2600
Top Plate Thickness (mm)	16
Fork Thickness (mm)	10

BIL GROUP LTD

Porte Marsh Road, Calne, Wiltshire, SN11 9BW

Registered in England No: 2603821

VAT Reg: GB572705729

