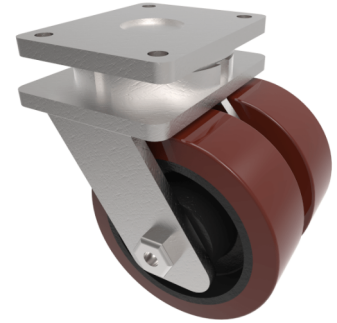


Polyurethane Cast Iron Plate Swivel Castor 200mm 3200kg Load

Product code: 2BZQX200PTBJ

Twin wheeled swivel castor with a top plate fixing fitted with 2 brown polyurethane wheels on cast iron centres with ball journal bearings. Wheel diameter 2 x 200mm, tread width 2 x 75mm, overall height 264mm, top plate 230mm x 160mm, hole centres 160mm x 120. Load capacity 3200kg.



Diameter (mm)	200
Fixing Option	Plate
Castor Type	Swivel
Bearing Type	Ball
Plate Size (mm)	200 X 160
Hole Centres (mm)	160 X 120
Height (mm)	264
Swivel Radius (mm)	175
To Suit Fixing Bolt (mm)	16
Wheel Material	Polyurethane on Cast Iron
Colour / Shore Hardness	Brown Polyurethane on Cast Iron Rim / 94 Shore A
Temperature Resistance	"-20 °C TO +80 °C
Tread (mm)	2 x 75
Load Capacity (kg)	3200
Top Plate Thickness (mm)	16
Fork Thickness (mm)	12