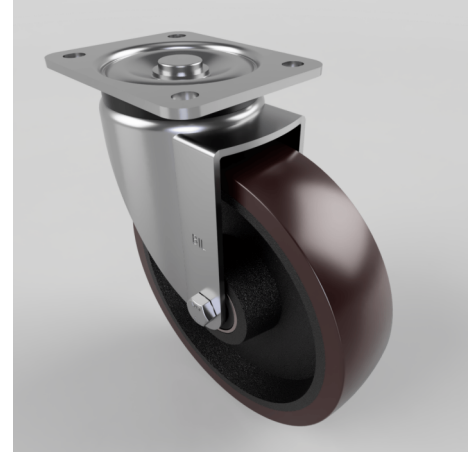


Polyurethane Cast Iron Plate Swivel Castor 200mm 700kg Load

Product code: BZSPH200PTBJ

Pressed steel swivel castor with a top plate fixing fitted with a brown polyurethane tyred cast iron centre wheel with ball bearings. Wheel diameter 200mm, tread width 57mm, overall height 238mm, top plate 135mm x 110mm, hole centres 105mm x 80/75mm and a Load capacity of 700kg.



Diameter (mm)	200
Castor Type	Swivel
Fixing Option	Plate
Height (mm)	238
Wheel Material	Polyurethane on Cast Iron
Colour / Shore Hardness	Brown Polyurethane on Cast Iron Rim / 94 Shore A
Temperature Resistance	-20 °C TO +80 °C
Bearing Type	Ball
Load Capacity (kg)	700
Tread (mm)	50
Swivel Radius (mm)	153
Plate Size (mm)	135 x 110
Hole Centres (mm)	105 x 80/75
Top Plate Thickness (mm)	5
Fork Thickness (mm)	5
To Suit Fixing Bolt (mm)	10