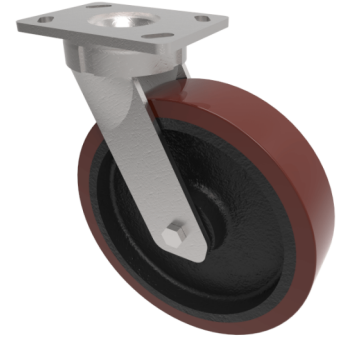


Polyurethane Cast Iron Plate Swivel Castor 250mm 1400kg Load

Product code: BZK250PTBJ

Fabricated swivel castor with a top plate fixing fitted with a brown polyurethane wheel on a cast iron centre with ball bearings. Wheel diameter 250mm, tread width 60mm, overall height 300mm, top plate 150mm x 110mm, hole centres 105mm x 80mm or 121mm x 59mm. Load capacity 1400kg.



Diameter (mm)	250
Fixing Option	Plate
Castor Type	Swivel
Bearing Type	Ball
Height (mm)	300
Plate Size (mm)	150 x 110
Hole Centres (mm)	105/121 x 80/59
To Suit Fixing Bolt (mm)	12
Wheel Material	Polyurethane on Cast Iron
Colour / Shore Hardness	Brown Polyurethane on Cast Iron Rim / 94 Shore A
Temperature Resistance	-20 °C TO +80 °C
Top Plate Thickness (mm)	7.5
Fork Thickness (mm)	6
Swivel Radius (mm)	197
Load Capacity (kg)	1400
Tread (mm)	60

BIL GROUP LTD

Porte Marsh Road, Calne, Wiltshire, SN11 9BW

Registered in England No: 2603821

VAT Reg: GB572705729

