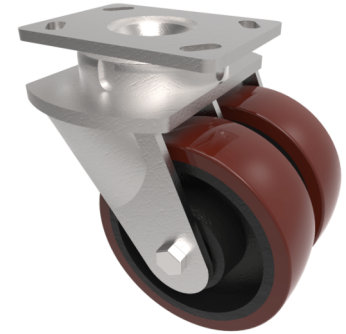


Polyurethane Cast Iron Plate Swivel Castor 250mm 1500kg Load

Product code: 2BZK250PTBJ



Twin wheeled swivel castor with a top plate fixing fitted with 2 polyurethane wheels on cast iron centres with ball bearings. Wheel diameter 2 x 250mm, tread width 2 x 60mm, overall height 300mm, top plate 150mm x 110mm, hole centres 105mm x 80mm or 121mm x 59mm. Load capacity 1500kg.

Diameter (mm)	250
Fixing Option	Plate
Castor Type	Swivel
Bearing Type	Ball
Plate Size (mm)	150 x 110
Hole Centres (mm)	105/121 x 80/59
Height (mm)	300
Swivel Radius (mm)	205
To Suit Fixing Bolt (mm)	12
Wheel Material	Polyurethane on Cast Iron
Colour / Shore Hardness	Brown Polyurethane on Cast Iron Rim / 94 Shore A
Temperature Resistance	"-20 °C TO +80 °C
Tread (mm)	2 x 60
Load Capacity (kg)	1500
Top Plate Thickness (mm)	7.5
Fork Thickness (mm)	6