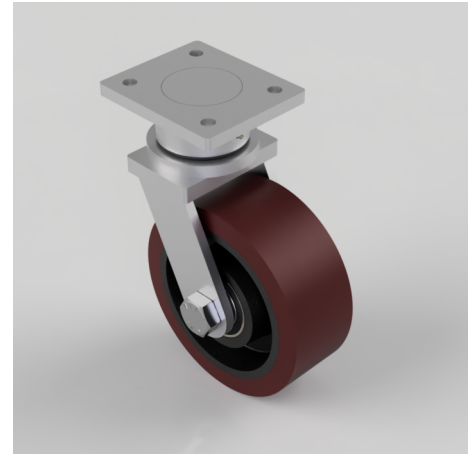


Polyurethane Cast Iron Plate Swivel Castor 250mm 2500kg Load

Product code: BZU250PTBJ/100/368

Fabricated swivel castor with a flat plate fixing fitted with a brown polyurethane tyre on cast iron centred wheel with ball bearings. Wheel diameter 250mm, tread width 100mm, overall height 368mm, plate size 178mm x 153mm, hole centres 127mm x 102mm. Load capacity 2500kg. ****MANUFACTURED TO ORDER****



Diameter (mm)	250
Fixing Option	Plate
Castor Type	Swivel
Bearing Type	Ball
Height (mm)	368
Plate Size (mm)	178 X 153
Hole Centres (mm)	127 x 102
To Suit Fixing Bolt (mm)	16
Wheel Material	Polyurethane on Cast Iron
Colour / Shore Hardness	Brown Polyurethane on Cast Iron Rim / 94 Shore A
Temperature Resistance	-20 °C TO +80 °C
Swivel Radius (mm)	197
Load Capacity (kg)	2500
Tread (mm)	100