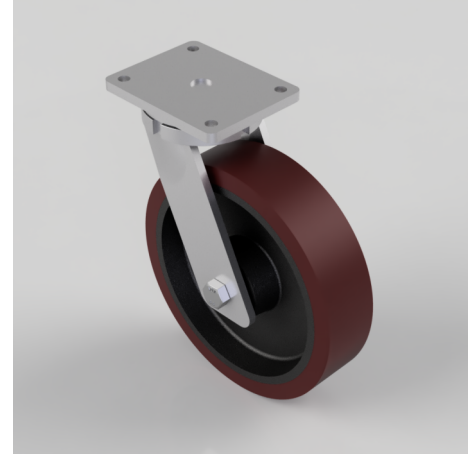


## Polyurethane Cast Iron Plate Swivel Castor 300mm 2200kg Load

**Product code: BZQ300PTBJ**

Fabricated swivel castor with a flat plate fixing fitted with a brown polyurethane tyred on cast iron centred wheel with ball bearing. Wheel diameter 300mm, tread width 75mm, overall height 365mm, plate size 175mm x 140mm, hole centres 140mm x 105mm. Load capacity 2200kg.



Diameter (mm)	300
Fixing Option	Plate
Castor Type	Swivel
Bearing Type	Ball
Height (mm)	365
Plate Size (mm)	170 X 140
Hole Centres (mm)	140 X 105
To Suit Fixing Bolt (mm)	14
Wheel Material	Polyurethane on Cast Iron
Colour / Shore Hardness	Brown Polyurethane on Cast Iron Rim / 94 Shore A
Temperature Resistance	-20 °C TO +80 °C
Top Plate Thickness (mm)	12
Fork Thickness (mm)	10
Swivel Radius (mm)	232
Load Capacity (kg)	2200
Tread (mm)	75

### BIL GROUP LTD

Porte Marsh Road, Calne, Wiltshire, SN11 9BW

Registered in England No: 2603821

VAT Reg: GB572705729

